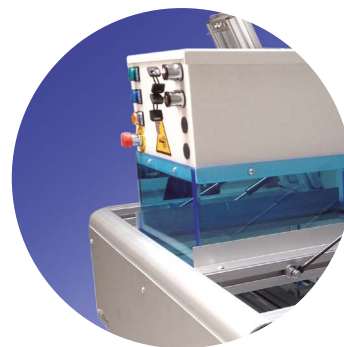
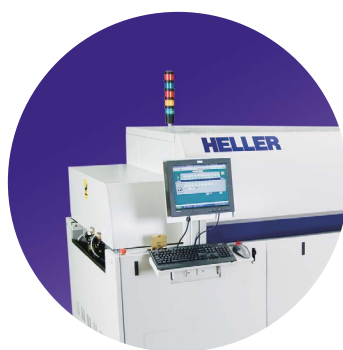


# **Mancini** **Enterprise** **Group**



***The Best Partner for Total Line  
Solution: Sales & Service***



***The Best Partner in support for Customers and  
in sales for Suppliers by long term cooperation.***

*In our business we have **3** partners: **Customer**, **Employee** and **Supplier**.  
All of them are the Key for the success. **Respect** and **Stability** are the **Value**  
that we offer to our partners, long term cooperation is our Main Goal.*



# Mancini Enterprise Group

## Products:

**Yamaha:** pick and place, screen printers, Aoi 3d

**Heller:** reflow and vacuum ovens

**Alutec:** desktop and in-line robots

**Seika:** depaneling solutions

**Fabertec:** custom automation Made in Italy

**Nutek:** board handlers, traceability solutions

**Sawa:** ultrasonic cleaners



# THE TOTAL LINE SOLUTION

**PRINTING****MOUNTING****INSPECTION****3D 3DX****DISPENSING****HYBRID PLACEMENT****FINAL ASSEMBLY**



## YCP10

Applicable PCB	L 50 x W 50 mm to L 510 x W 460 mm
Printing head	3S head: Single Swing Squeegee
Printing line tact	8 sec (standard printing: under optimum condition, except for printing time)
Positioning repeatability	10 $\mu$ m (6 $\sigma$ )
Applicable stencil size	L 750 x W 750 mm, L 736 x W 736 mm, L 750 x W 650 mm, L 650 x W 550 mm, L 600 x W 550 mm, L 550 x W 650 mm, L 584 x W 584 mm
External dimension	L 1,130 x W 1,760 x H 1,370 mm
Weight	Approx. 1,100 kg



## YSP

Applicable PCB	L 50 x W 50 mm to L 510 x W 460 mm Optional L 600 mm upon request
Printing head	3S head: Single Swing Squeegee
Printing line tact	9.5 sec (standard printing: under optimum condition, except for printing time)
Positioning repeatability	12.5 $\mu$ m (6 $\sigma$ )
Applicable stencil size	L 750 x W 750 mm, L 736 x W 736 mm, L 750 x W 650 mm, L 650 x W 550 mm, L 600 x W 550 mm, L 550 x W 650 mm, L 584 x W 584 mm
External dimension	L 1,640 x W 1,640 x H 1,400 mm (normal conveyor) L 1,973 x W 1,640 x H 1,400 mm (exit extension conveyor)
Weight	Approx. 1,500 kg

## Z:LEX YSM20/YSM20W High-efficiency modular mounter

### Three types head variations

The YSM20 and the new configuration YSM20W are most flexible production systems for high-mix applications. These machines are configurable to meet each production requirement on board size, applicable components and speed.

- **HM High-speed Multi-purpose head** using 10 nozzles in-line, is made for high-speed mounting and versatility supports from ultra-tiny chips of 03015 (mm) to large-size components of 45 x 100 mm and height of 15 mm.
- **FM Flexible Multi-purpose head** with 5 nozzles in-line supports force control, and handles a broad spectrum of components from ultra-tiny chips of 03015 (mm) to ultra-large components of 55 x 100 mm and tall components of heights up to 28 mm.

The YSM20 is available with 1 or 2 beams for x-axis configuration, ideal for setting up a flexible mounting line and for having both good mounting performance and versatility. Superb mounting performance besides incorporating an advanced new servo system employing high-speed control technology, this mounter also has a newly designed z-axis linear motor and tiny scan camera unit, as well as down-sized lightweight head with all sections revamped down to the small details to provide outstanding mounting performance.

### Standard features

- Side view camera
- Nozzle cleaning station
- High-speed smart recognition
- Touch screen in different languages

### Flexible feeding options

- The YSM20 offers front and rear fixed feeder banks and/or feeder carts for quick exchange of a setup.
- Fixed feeder banks hold up to 2 x 70 unique 8 mm components.
- Feeder exchange carriage system hold up to 4 x 32 unique 8 mm components.
- Each YSM20 can hold 1 or 2 tray handling system. The exchange carriage system cATS for 10 trays or the fixed tray handler for 30 trays. Both systems can be used on front and/or rear side. The tray exchange system can be easily changed with a feeder carriage system to maximize feeding capacity when no trays are needed.

### Wide range of board sizes

Select a single-lane or dual-lane conveyor system, or dual-stage operation with two-beam models, to match the PCB size and production volume you need.

Z:LEX YSM20/YSM20W configurations support a wide range of PCB sizes standard from L 810 x W 490 mm up to L 810 x W 742 mm in single-lane configuration or up to 2 x L 810 x W 356 mm in a dual-lane configuration.



## YSM20

## YSM20W

PCB size range	Dual stage (only for 2-beam system) L 810 x W 490 mm to L 50 x W 50 mm Dual stage max. PCB size: 2 x L 380 x W 490 mm	
	Single lane L 810 x W 490 mm to L 50 x W 50 mm Dual lane L 810 x W 230 mm to L 50 x W 50 mm	L 810 x W 742 mm L 810 x W 356 mm
Head/applicable components	HM high-speed multi-purpose head (10 nozzles): 0201* mm to 45 x 45 mm, L 100 mm, H 15 mm FM flexible multi-purpose head (5 nozzles): 0201* mm to 55 x 55 mm, L 100 mm, H 28 mm FM head with force control up to 30 N on each head	
Mounting accuracy	Cpk 1.0 ± 0.035 mm; 3 ± 0.025 mm	
Mounting capability	2-beam system with 2x HM head: 90,000 CPH/63,500 CPH IPC9850 2-beam system with 2x FM head: 34,500 CPH/27,000 CPH IPC9850	
	1-beam system with 1x HM head: 38,000 CPH/27,000 CPH IPC9850 1-beam system with 1x FM head: 16,000 CPH/12,500 CPH IPC9850	
Number of component types	Tape reel: 140 xed feeder plates, 8 mm width Tape reel: 128 feeder carriage exchange, 8 mm width	
	Tray: 30 types with xed SATS30 installed Tray: 10 types with tray carriage exchange (max. 2 per system)	
Power supply	3-phase AC 200/208/220/240/380/400/416 V ± 10%, 50/60 Hz	
Air supply source	0.45 MPa or more in clean dry state	
External dimension (excluding projections)	L 1,374 x W 1,857 x H 1,445 mm	L 1,374 x W 2,110 x H 1,480 mm
	Weight	Approx. 2,050 kg

\*Under condition



## YSM10

L 510 x W 460 mm to L 50 x W 50 mm

Note: Available in lengths up to L 610 mm as an option

0201\* mm to W 55 x L 100 mm (for parts sizes larger the width 45 mm, recognition of parts is divided into sections, applicable when tray handler sATS15 is used), height 15 mm or less.

Note: A multi camera (option) is required for part heights exceeding 6.5 mm or part sizes exceeding 12 mm

HM head (10 nozzle) specification: 46,000 CPH/30,000 CPH IPC9850 (under optimum conditions as defined by Yamaha Motor)

HM 5 head (5 nozzle) specification: 31,000 CPH/20,000 CPH IPC9850 (under optimum conditions as defined by Yamaha Motor)

± 0.035 mm (± 0.025 mm) Cpk ≥ 1.0 (3 σ)

Fixed plate: max. 96 types (conversion for 8 mm tape feeder)

Tray: 15 types (maximum when equipped with sATS 15, JEDEC)

3-Phase AC 200/208/220/240/380/400/416 V +/- 10%, 50/60 Hz

0.45 MPa or more, in clean, dry state

L 1,254 x W 1,440 x H 1,445 mm

Approx. 1,270 kg

Applicable PCB

Applicable components

Mounting capability

Mounting accuracy

(under optimum conditions as defined by Yamaha Motor when standard evaluation materials are used)

Number of  
feeder positions

Power supply

Air supply source

External dimension

Weight

\*Under condition




**i-PULSE series S10**
**i-PULSE series S20**

Board size: (with buffer unused) (with input or output buffer used) (with input and output buffers used)	Min. L50 x W30 mm to Max. L1,330 x W510 mm (Standard L955) Min. L50 x W30 mm to Max. L420 x W510 mm Min. L50 x W30 mm to Max. L330 x W510 mm	Min. L50 x W30 mm to Max. L1,830 x W510 mm (Standard L1,455) L50 x W30 mm to Max. L540 x W510 mm
Board thickness	0.4–4.8 mm	
Board flow direction	Left to right (Std)	
Board transfer speed	Max. 900 mm/sec	
Placement speed (12 heads + 2 theta) Opt. Cond.	0.08 sec/CHIP (45,000 CPH)	
Placement accuracy A ( $\mu + 3\sigma$ )	CHIP +/- 0.040 mm	
Placement accuracy B ( $\mu + 3\sigma$ )	IC +/- 0.025 mm	
Placement angle	+/- 180 degrees	
Z axis control/Theta axis control	AC servo motor	
Component height	Max. 30 mm* (Pre-placed components: max. 25 mm)	
Applicable components	0201 mm – 120 x 90 mm, BGA, CSP, connector, etc.	
Component package	8–56 mm tape (F1/F2 feeders), 8–88 mm tape (F3 electric feeders), stick, tray	
Drawback check	Vacuum check and vision check	
Screen language	English, Chinese, Korean, Japanese	
Board positioning	Board grip unit, front reference, auto conveyor width adjustment	
Number of feeder positions	Max. 90 types (8 mm tape), 45 lanes x 2	Max 180 types (8 mm tape), 45 lanes x 4
Transfer height	900 +/- 20 mm	
Machine dimensions, weight	L 1250 x D 1750 x H 1420 mm, approx. 1,150 kg	L 1750 x D 1750 x H 1420 mm, approx. 1450 kg

\* Board thickness + component height = max. 30 mm

Only for Spain & Portugal market





## YSi-V

Inspection camera	5 MP standard (2D or 3D)	12 MP high-end (2D or 3D)
Resolution	18 µm	12 µm (7 µm optional)
PCB size range	White + IR LED's. RGB by sw filter L 610 x W 560 mm (max.) to L 50 x W 50 mm (min.) Applicable for L 750 mm longer PCB (option)	
Target items	Components status after mounting, components status and solder status after hardening	
Power supply	3-phase AC 200/208/220/230 V ± 10%, 50/60 Hz	
Air supply source	0.45 MPa or more in clean dry state	
External dimension	L 1,252 x W 1,497 x H 1,550 mm (not including projections)	
Weight	Approx. 1,300 kg	



## YSi-X

<b>PCB</b>	Size range	L 100 × W 50 mm to L 560 × W 460 mm	
	Mounted components	Upper edge 40 mm, lower edge 80 mm (40 mm during inline)	
	Warping	2.0 mm or less	
	Weight	2.0 kg or less (> 2 kg on request)	
<b>X-ray inspection</b>	X-ray detector	<b>Type HB</b> Direct conversion panel method long service life type	<b>Type HD</b> FOS at panel system high speed type
	Resolution	18/27/36/54 µm	7/12/19/27 µm
	Maximum field of view	52 × 45 mm	62 × 78 mm
	Inspection speed 2DX	24.0 cm <sup>2</sup> /sec	93.7 cm <sup>2</sup> /sec
	Inspection speed 3DX	4.0 cm <sup>2</sup> /sec	15.5 cm <sup>2</sup> /sec
	Method	3D sliced images through digital laminography (planar CT)	
	X-ray source	Microfocus sealed tube	
<b>Optical inspection</b>	Tube voltage	0–130 kV	
	Inspection region	3D: L 510 × W 460 mm, 2D: L 560 × W 460 mm	
	Inspection speed	0.4 sec/visual field	
	Resolution	10 or 19 m (selection)	
<b>Laser inspection</b>	Lighting	3-step dome lighting, upper stage RGB & infrared, mid-stage RGB, lower stage RGB	
	Image capture system inspection region	Digital color camera, telecentric lens L 560 × W 460 mm	
	Resolution/method	5 m (height direction)/triangulation distance measurement by laser spot light	
<b>Laser inspection</b>	Inspection region	L 510 × W 360 mm	
	X-ray leakage quantity	Less than 0.2 µSv/h	
	Power supply/air supply source	3-phase AC 200/208/220/240/380/400/416 V ± 10%, 50/60 Hz/0.4 MPa or more	
	External dimensions	L 1,720 × D 1,883 × H 1,705 mm (excluding protrusions)	
	Weight	Approx. 2,900 kg	



### Σ-G5S

Head configuration	2 heads/module	
Mounting tact time (max.)	<b>High-speed head</b>	<b>Multi-functional head</b>
	75,000/53,500 CPH IPC9850	9,000 CPH/head
Applicable components	03015 chip to 44 mm <sup>2</sup> H: 12.7 mm	0201 chip to 72 mm <sup>2</sup> H: 35 mm connectors 150 x 26 mm
Mounting accuracy	03015 mm : +/- 25 μm (3σ)	IC : +/- 15 μm (3σ)
Applicable PCB size	Single lane	L 50 x W 50 mm to L 610 x W 510 mm (OP: L 1,200 x W 510 mm)
	Dual lane	L 50 x W 84 mm to L 610 x W 250 mm
External dimensions	L 1,280 x D 2,240 x H 1,450 mm	
Weight	Approx. 1,800 kg (excluding cart)	
Power supply	3-phase AC 200 V +/- 20 V, 50/60 Hz	
Supplied air pressure	Air supply source	0.45 to 0.69 MPa (4.6 to 7 kgf/cm <sup>2</sup> )



### Σ-F8S

**NEW**

Head configuration	4 heads/module	
Mounting tact time (max.)	Single lane	136,000/87,400 CPH IPC9850
	Dual lane	150,000/109,800 CPH IPC9850
Applicable PCB size	Single or dual lane	L 50 x W 50 mm to L 330 x W 250 mm
	Optional	L 50 x W 50 mm to L 381 x W 510 mm
Mounting accuracy	High-speed head	0201 chip: +/- 25 μm (3σ)
	High-speed multi-purpose head	03015 chip: +/- 25 μm (3σ)
Applicable components	High-speed head	0201 chip to 4.3 x 3.4 mm (T: 2.0 mm)
	High-speed multi-purpose head	03015 chip to 33 x 33 mm (T: 12.7 mm)
External dimensions	L 1,280 x D 2,240 x H 1,450 mm	
Weight	Approx. 1,940 kg (excluding cart)	
Power supply	3-phase AC 200 V +/- 10 V, 50/60 Hz	
Supplied air pressure	Air supply source	0.45 to 0.69 MPa (4.6 to 7 kgf/cm <sup>2</sup> )

# LASER MARKING

## KUBOMARK



### TECHNICAL DATA

Dimensions (LXPXH)	1020x1200x1650 mm
Weight	150 Kg
Power consumption	230V - 1750 WATT
Working area	600x400 mm
Marking area	300x300 mm (upgradable to 600x400 mm)
Marking Laser	CO2 Laser 30 W Keyence Wide Area
Character type	Barcode, 2D code Datamatrix (3x3mm 18 caratteri), GS1 DataBar, Logo, Image
Resolution marking	5µm
Basic working distance	Programmable Focus with Z axis (± variation 21mm)
Scan speed	6000 mm/s
Machine interface	SMEMA Standard

### OPTIONS

- Virtual PCB Flip allows to copy all codes on the second board side without turn it
- Conveyor automatic adjustment
- Fiducial mark for high-precision positioning
- Marking area upgrade to 600x400mm (Manual or automatic)
- Programming via barcode reading
- Check System of codes marked
- Check System of marking quality
- Check System of serialization multiline
- PCB ionized air cleaner
- Fume extraction and filtering system complete
- Import data from mrp marking / traceability system company

Mancini Enterprise S.R.L.  
Via Fabio Filzi 71  
20831 Seregno (MB)  
Italy  
Tel.: +39 0362 1857466  
Fax: +39 0362 1858362  
info@ManciniEnterprise.com

### MAIN FEATURES

KuboMark is a marking station with fixed laser marker, designed for integration on SMT lines, ideal for working on PCBs. The premium quality CO2 laser source can mark datamatrix codes, barcodes and alphanumeric codes in a working area of 600x400mm on electronic boards placed directly on the conveyor.

The power and quality of the laser source (laser CO2 30W **Keyence Wide Area**) ensure speedy execution, extreme marking cleanliness, maximum potential in the proprietary generation of two- and three-dimensional codes where the order of magnitude can also be 3x3mm (18 characters) over the entire available area. The incremental generator of the codes created according to the customer's specifications guarantees maximum security in terms of product traceability.

With KuboMark JPEG and DXF files can be imported and any type of image can be created.

KuboMark great flexibility means it can be integrated perfectly on existing assembly lines and for creating an automated work island

**KEYENCE**

**Mancini**  
Enterprise  
Group  
Your SMT Service & Sales Partner

# LASER MARKING

## QUICKMARK



### TECHNICAL DATA

Dimensions (LXPXH)	1050x1050x1550 mm
Weight	190 Kg
Power consumption	230V - 1750 WATT
Marking area	300x300 mm (max 1200x300)
Marking Laser	CO2 Laser 30 W
Character type	Barcode, 2D code Datamatrix (3x3mm 18 caratteri), GS1 DataBar, Logo, Image
Resolution marking	5µm
Basic working distance	300 (± variation 21mm)
Scan speed	6000 mm/s
Machine interface	SMEMA Standard

### MAIN FEATURES

**Quick-Mark** is a **fixed station** laser marker designed for integration on SMT lines, **ideal for working on PCBs**. The premium quality CO2 laser source can mark datamatrix codes, barcodes and alphanumeric codes in a working area of 300x300mm on electronic boards placed directly on the conveyor.

The power and quality of the laser source (laser CO2 30W with a 300x300mm working area) ensure speedy execution and extreme marking cleanliness offering maximum potential in the proprietary generation of two- and three-dimensional codes where the order of magnitude can also be 3x3mm (18 characters) over the entire available area. The incremental generator of the codes created according to the customer's specifications guarantees maximum security in terms of product traceability.

With **Quick-Mark** JPEG and DXF files can be imported and any type of image can be created. The laser unit installed can also be used for 3D marking (optional) with a third depth axis for producing effective marking also on uneven surfaces or surfaces geometrically on different, semi-spherical or tetrahedral planes. **Quick-Mark's** great flexibility means it can be integrated perfectly on existing assembly lines and for creating an automated work island; The Laser Marker is equipped with 1000mm adjustable conveyor (3000mm optional) and top-access for visual inspection. **Quick-Mark** is the ideal solution to combine premium quality marking and production flexibility at a good price and with a quick return on the investment.

#### Mancini Enterprise S.R.L.

Via Fabio Filzi 71 - 20831 Seregno (MB) Italy

Tel.: +39 0362 1857466

Fax: +39 0362 1858362

info@ManciniEnterprise.com

**KEYENCE**

**Mancini**  
Enterprise  
Group  
Your SMT Service & Sales Partner



## Portable Metal stencil Cleaner SC-7000CE

SAWA CLEAN

MADE IN JAPAN

*Is there any solder paste or adhesives  
in the apertures on your stencils?*



### POWERFUL

- The cleaning head directly applies ultrasonic vibration providing powerful cleaning capability.
- Use the SC-7000CE to remove solder paste, SMT/SMD adhesives on your stencils and misprinted circuit boards.

### POWER SAVING

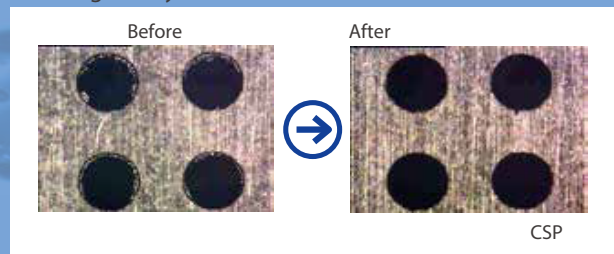
- Save electrical power compared to spray-type cleaners.

### HIGH QUALITY PORTABLE CLEANER

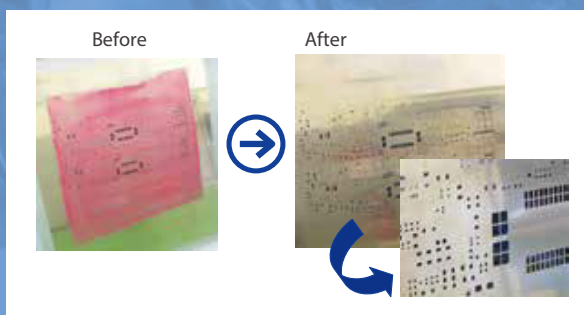
- With its compact design the SC-7000CE is very handy to carry but also deliver truly high-performance results.

Improve the printing quality,  
increase the productivity and reduce costs.

#### Cleaning Ability



#### SMT adhesives on the stencils



#### Specifications

Product No.	SC-7000CE		
Outside Dimension	Ultrasonic Generator	W250 D345 H200mm	Weight 13kg
	Cleaning Head	W120 D185 H105mm	Weight 2kg
Tray	W800 D800 H20mm Weight 6kg		
Ultrasonic	Output power 150W Frequency 40kHz		
Power	Built in transformer AC230V 50/60Hz 320VA		
Connection Cable	AC cord 3.0m		
Foot Switch	Cable 3.0m		

Specifications are subjected to change without notice.

2016-2



#### SAWA CORPORATION

2-17-1 Tsudayamate, Hirakata-shi, Osaka 573-0127, JAPAN  
TEL: +81-72-859-7286 FAX: +81-72-859-7287  
MAIL info@sawa-corp.co.jp



www.sawa-corp.co.jp

**Mancini**  
Enterprise  
Group

Your SMT Service & Sales Partner

#### Mancini Enterprise S.R.L.

Via Fabio Filzi 71 - 20831  
Seregno (MB) Italy  
Tel.: +39 0362 1857466  
Fax: +39 0362 1858362  
info@ManciniEnterprise.com

## Reduce VOC emission and running cost!

**SAWA ECOBRID**

**SC-AH100CE**



### Cleaning+Drying= 6minutes! (Minimum)

- Ultrasonic and suction drying system works simultaneously as one unit.

### Less damage on the stencils.

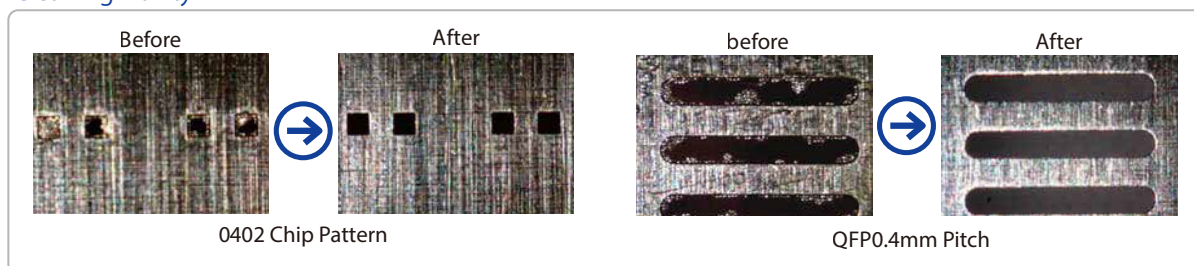
- Solvent is provided only to the surface to clean and does not touch the combination.
- This unique system prevent from any damage on your stencils.

### Large reduction of running cost.

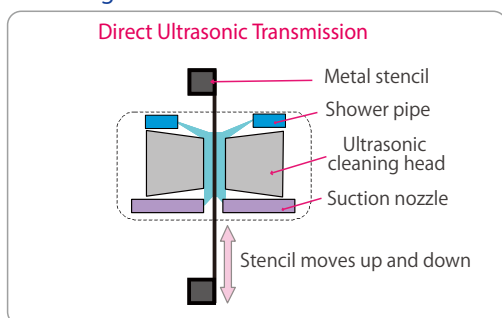
by reducing solvent consumption.

- Solvent consumption per cycle= 50cc~70cc (conventional ratio approx. 65% down)
- Low volatility of solvent can contribute to low running cost.

### Cleaning Ability



### Cleaning Mechanism



### Specifications

Product No.	SC-AH100CE
Outside dimension	W 870 D1,475 H 1,666mm (Including projecting parts.)
Weight	300kg (Dry weight)
Power	AC110, 120, 220, 230, 240V 50/60Hz 500VA
Ultrasonic	40kHz 300W
Air	0.4MPa 650NL/min
Exhaust duct	5.5m / sec Diameter φ98mm
Tank capacity	20 Litter (Initial input 10 Litter)
Applicable stencil size	550×600mm <sup>※1</sup> , 550×650mm <sup>※1</sup> , 736×736mm
Cleaning agent	HA-2789U, VIGON SC200 (Low VOC Solvent)

※1 Adapter required. ※Cleaning time may differ depending on condition.



Contribute to the earth benefit

**SAWA CORPORATION**

2-17-1 TSUDAYAMATE, HIRAKATA-SHI, OSAKA 573-0128, JAPAN

TEL: +81-72-859-7286 FAX: +81-72-859-7287

MAIL: info@sawa-corp.co.jp

URL: http://www.sawa-corp.co.jp

**Mancini**  
Enterprise  
Group  
Your SMT Service & Sales Partner

**Mancini Enterprise S.R.L.**

Via Fabio Filzi 71 - 20831

Seregno (MB) Italy

Tel.: +39 0362 1857466

Fax: +39 0362 1858362

info@ManciniEnterprise.com

## Improve the performance of your mounter nozzles

### SAWA ECO NOZZLE

### SC-ENXce



#### Improve the maintenance process

- Our original double cleaning combine ultrasonic and vacuum to clean thoroughly inside nozzles.
- It helps in reducing failures of nozzles to suction.

#### Eco friendly

- Use "Purified Water" for regular cleaning.

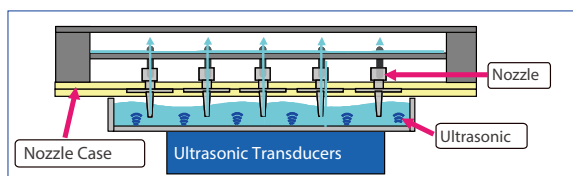
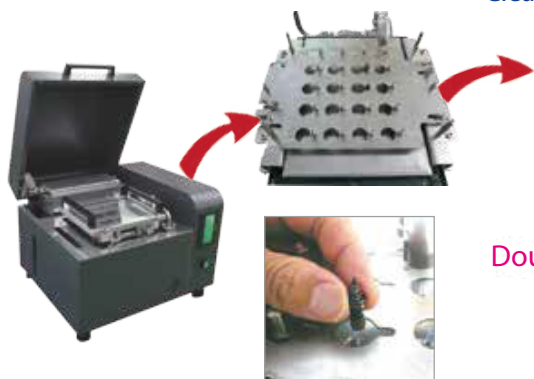
#### Easy Setup clean max. 80 nozzles!

- Just detach the jig with nozzles from your mounter and place it in our nozzle holder.

\*This type of holder for 80 nozzles is available only for YAMAHA

A mounter YSM40.

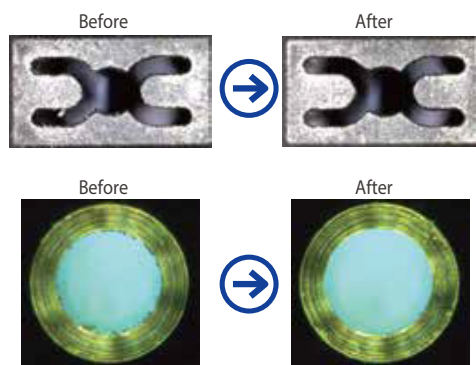
#### Cleaning Mechanism



#### Double cleaning power with ultrasonic and vacuum!

Able to clean thoroughly the nozzles as well as inside the nozzles by the vacuum unit which enables purified water combined with ultrasonic to go through the nozzle holes.

#### Cleaning Ability



Use purified water for regular cleaning.

#### Specifications

Product No.	SC-ENXce
Outside dimension	W 500 D 519 H 353mm (Including projecting parts)
Weight	28.5kg (Dry weight)
Power	AC100V, 120V, 220V, 240V 50/60Hz 30VA
Ultrasonic	40kHz 9W
Air	0.3MPa 180NL/min
Tank capacity	2 Litter (Initial input 1 Litter)
Cleaning agent	Purified water
Cleaning time	Approx. 5min.
Air vacuuming time	Approx. 5min.

Available for many nozzle types, such as YAMAHA(including  $\Sigma$  series), Panasonic, Fuji, ASM, JUKI and more.

\*For other nozzle types, please contact us.



Contribute to the earth benefit

**SAWA CORPORATION**

2-17-1 TSUDAYAMATE, HIRAKATA-SHI, OSAKA 573-0128, JAPAN

TEL: +81-72-859-7286 FAX: +81-72-859-7287

MAIL: info@sawa-corp.co.jp

URL: http://www.sawa-corp.co.jp

**Mancini**  
Enterprise  
Group  
Your SMT Service & Sales Partner

**Mancini Enterprise S.R.L.**

Via Fabio Filzi 71 - 20831

Seregno (MB) Italy

Tel.: +39 0362 1857466

Fax: +39 0362 1858362

info@ManciniEnterprise.com



## Is there any solder paste or adhesives in the apertures on your stencils?



### SC-500H Voltage Transformer set

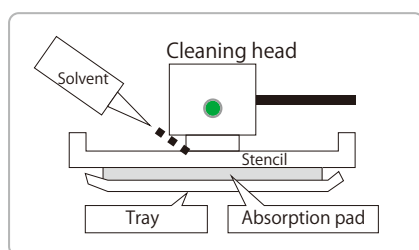
Easy and economic solution



### Our portable cleaner is the Solution

#### Recommend to users who ...

- Wants to clean without taking stencils out of the printers
- Currently clean by hand
- Wants inexpensive solution
- Wants to clean Screen Mask as well



#### Stencil cleaning

- Clean within few seconds the solder paste and adhesives from the apertures.
- Low solvent usage.
- Clean without taking stencils out of the printers.

#### Specifications

Product No.	SC-500H
Ultrasonic Generator	W 80 D 190 H 44mm Weight 1.25kg AC Cord 1.9m
Cleaning Head	φ 60mm H 57mm Cleaning Area φ 48mm Weight 0.4kg Connection Cord 1.5m
Tray	W 270 D 120 H 30mm Weight 0.55kg
Power	AC100, 110, 120, 220, 240V 50/60Hz
Powe consumption(VA)	40VA
Ultrasonic	40kHz

#### Voltage Transformer Set (110-120V)

Product No.	SC-DT115
Voltage transformer	W 62 D 100 H 54mm Weight 0.5kg
Capable voltage	AC110-120V
Absorption pad	SP-20 20pieces (10t x 190 x 140mm/piece)

#### Voltage Transformer Set (220-240V)

Product No.	SC-DT230
Voltage transformer	W 76 D 110 H 67mm Weight 1.0kg
Capable voltage	AC220-240V
Absorption pad	SP-20 20pieces (10t x 190 x 140mm/piece)

Specifications are subjected to change without notice.

2017



Contribute to the earth benefit

**SAWA CORPORATION**

2-17-1 Tsudayamate, Hirakata-shi, Osaka 573-0127, JAPAN

TEL: +81-72-859-7286 FAX: +81-72-859-7287

MAIL info@sawa-corp.co.jp

URL http://www.sawa-corp.co.jp



**Mancini Enterprise S.R.L.**

Via Fabio Filzi 71 - 20831

Seregno (MB) Italy

Tel.: +39 0362 1857466

Fax: +39 0362 1858362

info@ManciniEnterprise.com

## 1809 Mark III Series - SMT Reflow Oven

Best value SMT Reflow Oven in the market. Designed for Low Cost of Ownership.

1809 Mark III Series SMT Reflow Oven System

1809 Mark III

1809 Mark III (with optional 3rd cooling zone)

The 1800 models support high mix / high volume throughput... at speeds up to 32 inches (80 centimeters) per minute, while conserving valuable factory floor space. Rapid response times and precise temperature controls assure process uniformity, regardless of component density or board loading, with identical profile performance in either air or nitrogen.

### Highest Yields and Tight Process Control

The most efficient heat transfer from extra high volume, high-velocity, heating modules, producing heater module response of less than one second to temperature changes of less than 0.1°C, thereby maintaining profile integrity for heavy board loads.

Wide process window for “universal profiling” - allows many different boards to be run on a single temperature profile.

Advanced 5 thermocouple PCB profiling and process parameter logging capability with the capacity to store up to 500 temperature recipes and 500 profile graphs.

With a high-capacity, 26-inch wide heater module, the 1800 Mark III series reflow oven offers unmatched flexibility in board handling.

The oven may be fitted with an adjustable single-rail edge hold conveyor/mesh belt combo, to carry even the largest boards or multi-board panels (up to 20 inches wide) through the oven.



## 1936/2043 Mark 5 - Reflow Oven System

The World's Best Convection Reflow Oven.

The ultimate high volume production solutions with belt speeds up to 1.4 m/min to accommodate the fastest pick and place systems.

Mark 5 Series SMT Reflow Oven System.

Lead Free Certified!

Maintenance Free!

Lowest Nitrogen & Electrical Usage!

Integrated Cpk software at No Charge!

The 1936 and 2043 MK5 systems deliver the highest levels of repeatability with the lowest delta Ts.

The latest breakthroughs associated with the Mark 5 reflow system now provide you with an even lower cost-of-ownership. Heller's new heating and cooling advances deliver up to 40% reduction in nitrogen and electrical consumption. This makes the MK 5 system not only the premier reflow soldering system but the best overall value in the industry!

*Our focus on technology-driven solutions in partnership with our customers has been consistently recognized throughout the years by several industry agencies including three Vision Awards for new product innovation, two Market Leadership Awards, two Service Excellence Awards, several awards for vendor excellence and appointments to prominent positions on Industry committees and boards. Certainly these awards and appointments validate our market leadership; but they also confirm that Heller is at the forefront of the technology curve - constantly bringing new innovations to market faster and with greater impact than our competitors.*

### **2017 Frost & Sullivan Award - Company of the Year**

Heller Industries has been awarded the 2017 Global Frost & Sullivan Company of the Year Award for its surface mount technology (SMT) soldering equipment that enables Industry 4.0. - the automation and data exchange in manufacturing technologies.

### **2016 Frost & Sullivan Award -Growth Excellence Leadership**

Based on its recent analysis of the surface mount technology (SMT) reflow soldering equipment market, Frost & Sullivan recognizes Heller Industries, Inc. with the 2016 Global Frost & Sullivan Award for Growth Excellence Leadership. Heller Industries has made remarkable improvements to its product and technology portfolios over the last 10 years to emerge a top participant in the SMT reflow soldering equipment market.





## ***Customers Service Is Our Excellence.***

### ***TECHNICAL SUPPORT***

*Our Team of expert technicians is available for support to any kind of request for your production line.*

### ***INSTALLATION***

*Our Team of certified engineers is available for complete installation on site.*

### ***TRAINING***

*Our Team can perform training courses on site or in the demo centres in local languages.*

### ***SERVICE CONTRACTS***

*We can manage service contracts on the full range of our products.*

### ***SPARE PARTS***

*For all systems that we support we can supply spare parts.*

*We have also spare parts for systems not in current production and out from the official servicing limit time.*

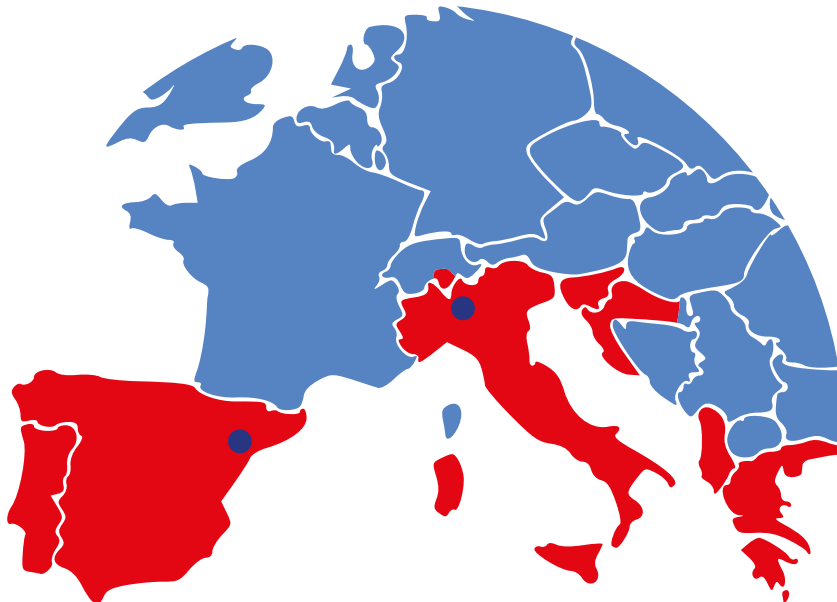
### ***ACCESSORIES***

*Our team can supply accessories like feeders, stick feeders and what you will need for any kind of application.*

### ***REFURBISHED PRODUCTS***

*We can supply high quality refurbished machines with warranty, to fit a specific client budget.*

## Where we are....



**Seregno (Milan) ITALY:**  
**Castelldefels (Barcelona) SPAIN:**

**Contact for :**  
**Italy - Croatia - Greece - Malta - Slovenia**  
**- Swiss (Ticino)**

**Mancini Enterprise s.r.l.**  
Via Fabio Filzi 71  
20831 Seregno (MonzaBrianza), Italy

**For sales:**  
Please email to: [info@mancinientreprises.com](mailto:info@mancinientreprises.com)

**For spare parts:**  
Please email to: [assistenza@ManciniEnterprise.com](mailto:assistenza@ManciniEnterprise.com)

**For service jobs:**  
Please email to: [assistenza@ManciniEnterprise.com](mailto:assistenza@ManciniEnterprise.com)

**For all information you may require:**

Phone: 39 0362 1857466  
[info@mancinientreprises.com](mailto:info@mancinientreprises.com)

**Office - Demo Point- Warehouse**  
**Office -Demo Point** in collaboration with: **ESTANFLUX<sup>1</sup>**

**Contact for:**  
**Spain - Portugal:**

**Trusted Technology Spain, S.L.**  
C/ Gomis, 34  
08023 Barcelona, Spain

**For sales:**  
Please email to: [info@estanflux.com](mailto:info@estanflux.com)  
**ESTANFLUX<sup>1</sup>**

**For spare parts:**  
Please email to: [parts@ttsmt.es](mailto:parts@ttsmt.es)

**For service jobs:**  
Please email to: [sat@ttsmt.es](mailto:sat@ttsmt.es)

**For all information you may require:**

Phone: +34 93 516 0130  
[mayuko.kurachi@ttsmt.es](mailto:mayuko.kurachi@ttsmt.es)

**Mancini**  
**Enterprise**  
**Group**